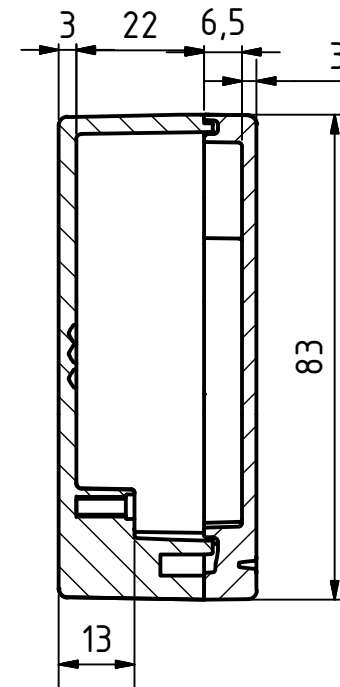
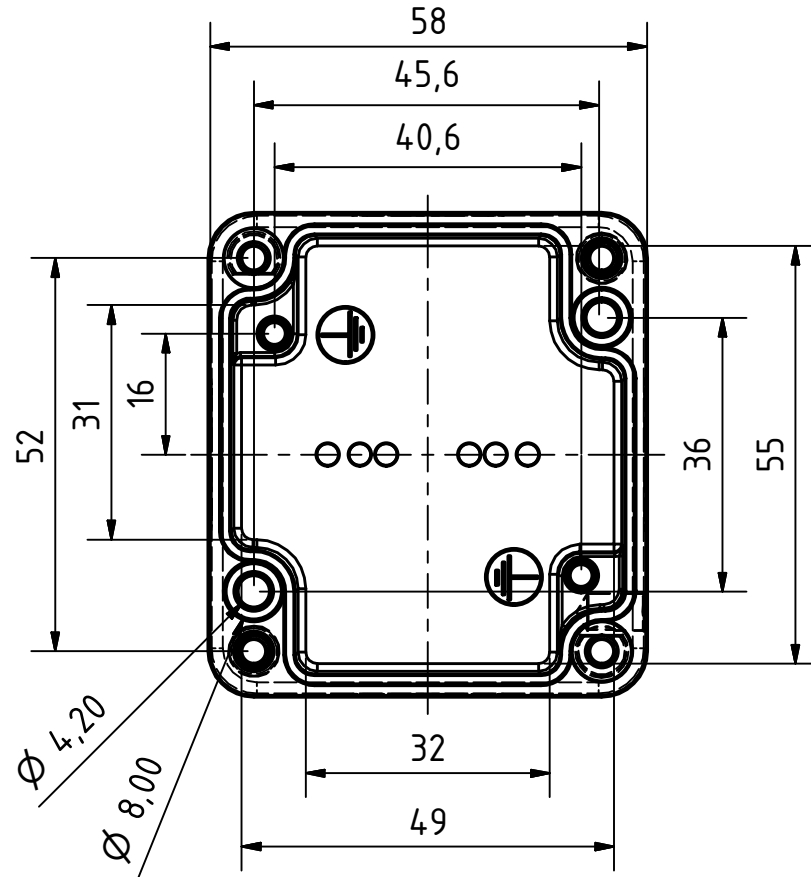
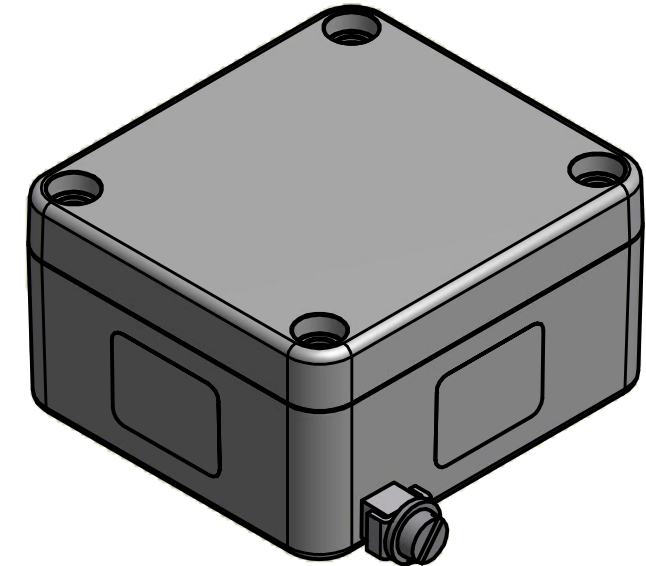
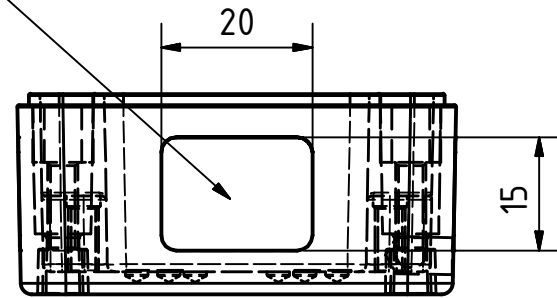



Belegungsflächen



 <b>MULTI-BOX</b> THE BOX COMPANY	(Zul.Abw.) DIN 1688 GTA 13/5	(Oberfläche)	Masstab: 1:1	Gewicht:	
			Werkstoff: AlSi9(Cu)		
	Datum	Name	Benennung:		
	Bearb. 19.12.2011	SG			
	Gepr.				
	Norm				
	MULTI-BOX GmbH Wallücker Bahndamm 7 D-32278 Kirchlengern www.multi-box.com		Zeichnungsnummer: <b>MBA 606030 Aussenerde</b>	Blatt	
Zust.	Änderung	Datum	Name	(Ers. f.):	(Ers. d.):